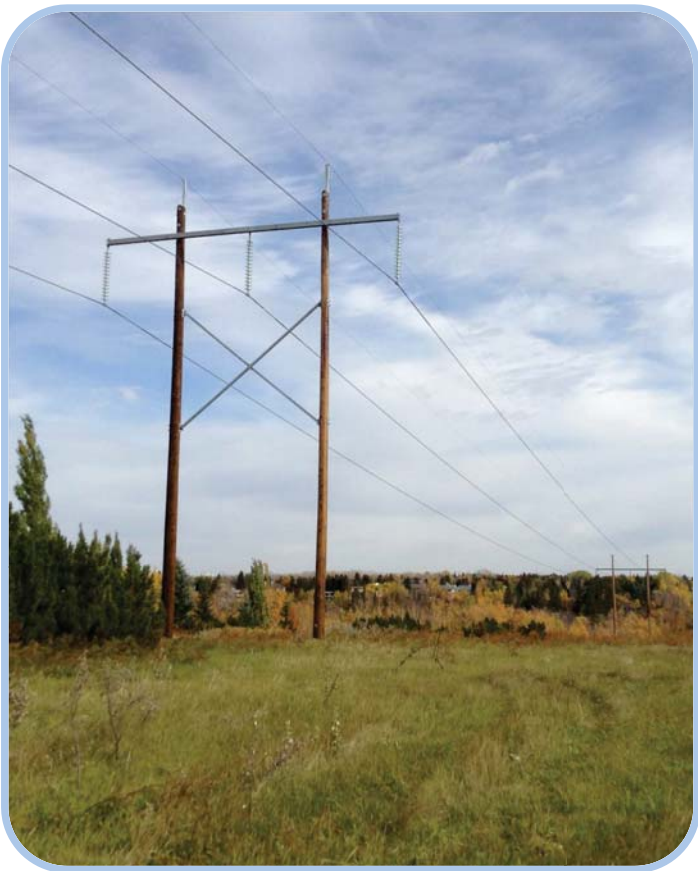


# WELCOME

## Jenner Wind Power Interconnection Project

### PUBLIC OPEN HOUSE



Please sign in at the registration desk and then feel free to walk around and browse our poster displays.

Our representatives are here to provide information about the proposed project. Please ask us about any questions that you might have regarding the project.



# KEY PLAYERS

## **The Alberta Electric System Operator (AESO)**

AESO is an independent, not-for-profit entity responsible for the safe, reliable, and economic planning and operation of the provincial transmission grid.

## **The Alberta Utilities Commission (AUC)**

The AUC is an agency that ensures the fair and responsible delivery of Alberta's utility services. The AUC is the provincial regulator responsible for reviewing transmission Facility Applications. AUC approval is required before construction of new transmission facilities can occur.

## **Joss Wind Power Inc. (Joss Wind)**

Joss is a private Canadian company focused on commercial scale wind power exploration and development in western Canada. We have been active in Alberta for 10 years. Joss has applied to the AESO for transmission system access to connect its proposed Jenner Wind Power Project (JWPP). The proposed Jenner Wind Power Interconnection Project (this Project) will facilitate the connection of the proposed JWPP to the Alberta electrical grid. The costs associated with this interconnection project will be paid for by Joss Wind.

## **AltaLink**

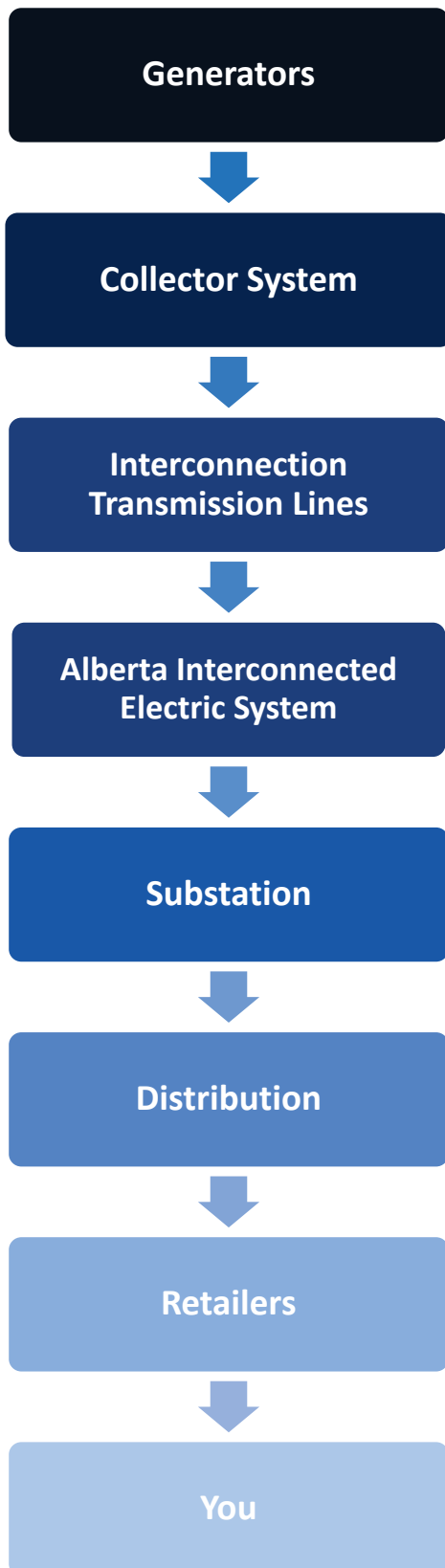
AltaLink is an independent company and is Alberta's largest regulated electricity transmission company. They provide electric service to more than 85 percent of Albertans and own the majority of the transmission system in central and southern Alberta. AltaLink is responsible for the modifications at AltaLink's existing Jenner substation that are required to facilitate the connection of the JWPP. AltaLink's modifications are separate from the Joss Project and they will consult separately.

## **Stakeholders**

Key stakeholders include project landowners, adjacent landowners, grazing lease holders, Special Areas, the Jenner community and other interested parties (including you!).



# ELECTRICITY AT A GLANCE



Generating facilities (such as the Jenner Wind Power Project) convert various forms of energy into electric power

Collector systems are used to gather the power produced by generators (such as wind turbines) to a central project-specific collector substation

Transmission Lines connect the power produced at generating facilities to Alberta Interconnected Electric System substations

Includes the Alberta grid of transmission lines, transformers, and system substations to move electricity around the province

System substations include the connection points between transmission and distribution systems

Distribution lines carry electricity to your homes, farms and businesses

Retailers give consumers a choice of electricity service providers

Electricity is used to power your homes, farms and businesses



# PUBLIC CONSULTATION

Your involvement and input is important to us and we will work with you to make sure that your concerns are understood.

Joss representatives will contact residents and landowners near the potential routes. They will have maps of the proposed route in proximity to your house or land.

We will use your feedback to refine route options for the proposed project. Based on preliminary consultations, routes will be evaluated and at least two options will be submitted to the Alberta Utilities Commission (AUC) for consideration.

At the end of our consultations, Joss will submit a Facilities Application to the AUC for review and approval.



# PROPOSED PROJECT

Joss Wind Power Inc. (Joss Wind) has applied to the Alberta Electric System Operator (AESO) for transmission system access to connect its proposed Jenner Wind Power Project (JWPP)\*. The proposed Jenner Wind Power Interconnection Project (this Project) will facilitate the connection of the proposed JWPP to the Alberta electrical grid. The costs associated with this Project will be paid for by Joss Wind.

This Project involves the construction of approximately 14 kilometres of 240 kilovolt (kV) transmission line.

The proposed transmission line will connect Joss Wind's Halsbury\* wind substation to AltaLink's existing Jenner substation.

The connection of the JWPP also requires modifications at the existing Jenner substation, which are separate from the Project and will be consulted on separately by AltaLink.

## Transmission Line

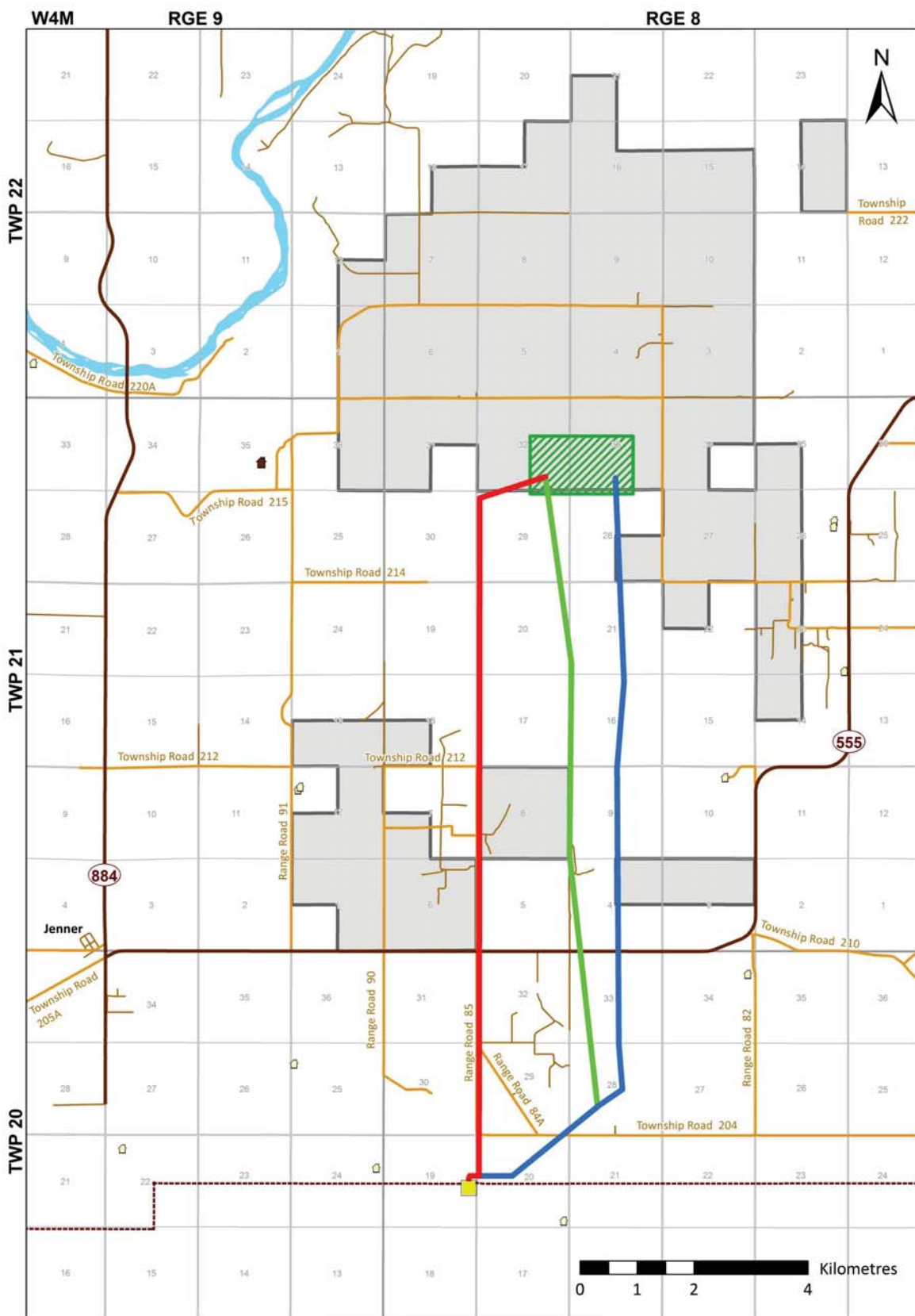
The proposed 240 kV transmission line (to be called 949L) will likely consist of single-circuit wood H-frame cross-braced structures similar in design to the structure shown here. These structures typically:

- have a total height of approximately 16-18 metres
- have a width of approximately 17 metres at the widest arm
- require a right-of-way of up to 34 metres wide plus additional right-of-way for deflections
- have a distance of approximately 250 metres between structures



\*Please see additional information on the JWPP and the Halsbury substation in the adjoining display area

# POTENTIAL ROUTE OPTIONS



## Route Selection

When identifying route options, Joss Wind takes several factors into consideration in an effort to find routes with the lowest overall impact.

Key factors we take into consideration include:

- Agricultural
- Residential
- Environmental
- Electrical
- Cost
- Input from stakeholders
- Visual
- Special considerations

Please let us know what other factors are important to you so we can consider them when refining route options.

### Legend

Existing Jenner Substation	House	<b>Potential Interconnection Routes</b>
Existing 240kV Transmission Line	Jenner Colony	
Potential Area for Proposed Halsbury Substation Location	Highway	
Jenner Project Boundary	Collector	Route 1
	Local Road	Route 2
		Route 3



# ENVIRONMENT

Joss is committed to limiting environmental impacts. Construction and maintenance activities will comply with applicable environmental legislation, regulation and government policies.

Joss will ensure that its contractors use appropriate techniques to protect water quality, soils, vegetation and wildlife habitat.

Regional environmental studies have been completed. Current and future studies will help us to determine the preferred routes and to maintain appropriate setbacks from wetlands, wildlife and other features.

We will also continue to consider how the project and its construction affects you and we will work with residents to make sure that we minimize our impacts.



# ELECTRIC AND MAGNETIC FIELDS (EMF)

We recognize that some people are concerned about EMF and we treat those concerns seriously. Fortunately, this proposed transmission line is not going to be in close proximity to any existing dwellings\*.

National and international organizations such as Health Canada and the World Health Organization have been conducting and reviewing research about EMF for more than 40 years. Based on this research, these organizations have not recommended that the general public take steps to limit their everyday exposure to EMF from high voltage transmission lines.

If you have any questions or concerns about EMF please talk to a Scott Land representative or see the Health Canada study link found at:

[josswind.com/projects/jenner](http://josswind.com/projects/jenner)

\* The nearest residence is over 1 km away from the proposed transmission line





# LAND AND COMPENSATION

Joss is committed to providing fair and reasonable compensation based on industry standards to landowners who may have transmission facilities on their property.

We will provide compensation in the form of Annual Structure Payments (ASP) for the land used by our transmission facilities. Included in the cost of these payments are expenses for weed control and other agricultural impacts.

Compensation discussions will take place during upcoming phases of consultation. Consultation will include grazing lease holders and private land owners.



# PROPOSED PROJECT SCHEDULE

2015	Q4
	Q1
2016	Q2
	Q3
	Q4
	Q1
2017	Q2
	Q3
	Q4
	Q1
2018	Q2
	Q3
	Q4

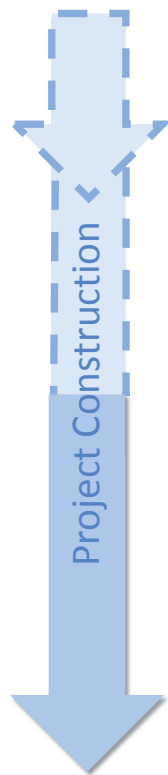


Stakeholder consultation



File application with Alberta Utilities Commission (AUC)

**NOTE:** Schedule subject to change based on consultation, regulatory approvals, government policy, and market conditions.



Commence construction\*

\* depending on regulatory approvals

Construction completed\*

# THANK YOU

Thank you for joining us  
at our open house

We encourage you to speak to any of the representatives here today for more information on any of the topics covered on our posters.

If you have any further questions or comments please feel free to fill out a comment sheet. You can also send us questions or comments at the email, address, or phone number listed on the comment sheet or newsletter.

